

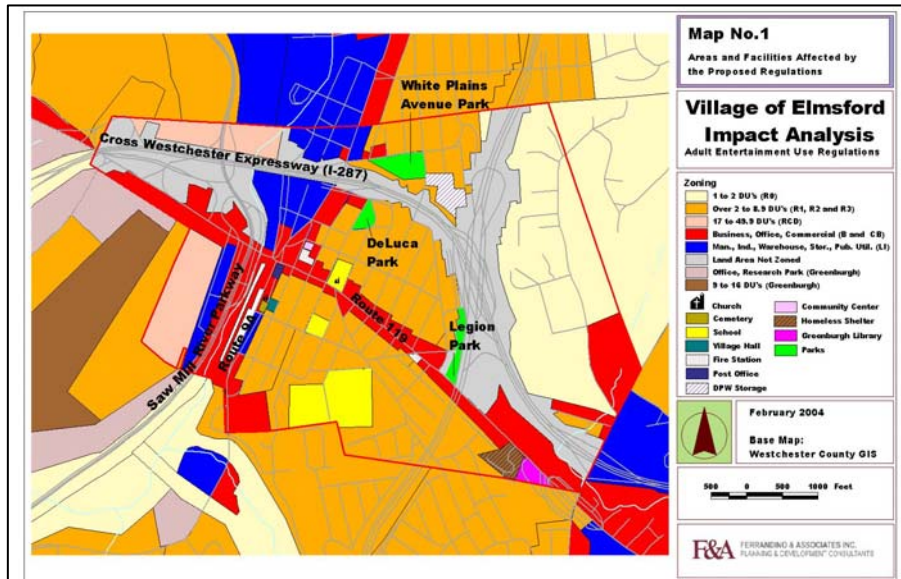
# VILLAGE OF ELMSFORD

New York

F&A was retained by the Village of Elmsford to prepare an ordinance aimed at regulating the location of adult-oriented businesses in the Village. In addition, F&A prepared a secondary effects study and a planning analysis to determine the potential impact of adopting the proposed legislation, which was ultimately approved by the Village Board of Trustees. F&A continues to advise the Village on adult entertainment-related zoning and land use issues.



Existing Adult Use on I-287 Eastbound Ramp  
Elmsford, New York



Mapping Analysis for Elmsford Adult Use Study